



## Safety Lines

### Contents

- Certificate of Inspection – Change of Controller
- Ensuring Pressure Equipment Safety – Revised Standard
- CE Marking of Pressure Equipment
- Business (more or less) as usual
- Announcements
- 3rd Metals Industry Conference
- HERA Courses and Seminars
- Puzzle Place

### Certificate of Inspection – Change of Controller

A recent enquirer asked if a change of company ownership made it necessary for all its equipment certificates of inspection to be replaced. Basically the answer to this is 'no' where there are no other changes to the equipment. A reinspection and reissue of certificate is not necessary merely so that it will immediately reflect a change of controller details, which has occurred during the period of validity of the certificate. In due course the certificates would be replaced after routine scheduled inspection by new ones bearing the current controllers details.

Regulation 33(1) of the PECPR Regulations states in effect that a certificate of inspection remains in force until it:

- Reaches its expiry date;
- Is replaced by a new certificate issued as a result of repair, alteration, or following inspection to determine safety after being restored from an unsafe condition; or
- Is suspended or cancelled by an inspection body.

It should be noted that:

1. A certificate of inspection must have the controller's correct name and address at the time of its issue.
2. 'Alteration' includes relocation; so relocated equipment needs reinspection and the issue of a new certificate of inspection.

---

### Ensuring Pressure Equipment Safety – Revised Standard

*This article was submitted by Standards New Zealand.*

AS/NZS 3788:2006 Pressure equipment – In-service inspection is a revised Standard which will help organisations to ensure the safe operation of pressure equipment and comply with OSH legislation.

The revised Standard is critical to all organisations and industries with pressure equipment – such as in-service boilers and piping - and specifies the minimum requirements for the inspection, repair and alteration of pressure equipment. If equipment is not maintained and properly inspected, it can become a safety hazard to staff and the general public.

AS/NZS 3788:2006 supersedes the 2001 version. Updates to the Standard include:

- Greater emphasis on responsibility to use competent bodies for inspection and assessment processes – a reflection of current OSH regulations.
- Guidance material to aid industry in assessing the competence of bodies and personnel for different tasks.
- For inspectors, guidance on how to deal with poorly marked or unidentifiable equipment.
- Appendix on fracture mechanics significantly revised.
- New appendix added for inspection of support structures.

The new Standard can be purchased from Standards New Zealand on 0800 735 656 or ordered on-line at their [website](#).

The new Standard can be purchased from Standards New Zealand on 0800 735 656 or ordered on-line at their [website](#).

---

## CE Marking of Pressure Equipment

*Note: The following article appeared in Safety Lines issue 67 and on our web site. It is reproduced here in slightly altered form to correct references and to more fully accommodate the documentation permitted under 87/404/EEC. Changes in this article will also be reflected in the version on our web site.*

Engineering Safety has received a number of queries about the status of CE marked pressure equipment of overseas manufacture, and as a result the following policy outlined in this article has been established.

In general, the suppliers' duties under regulation 20(2) of the Health and Safety in Employment (Pressure Equipment, Cranes, and Passenger Ropeways) Regulations 1999 are deemed to be met, and CE marked pressure equipment of overseas manufacture may be certified for service in New Zealand, provided the equipment:

1. Complies with European Commission document Simple Pressure Vessel Directive (87/404/EEC) or, Pressure Equipment Directive (97/23/EC);
2. Falls below the range of equipment requiring, in accordance with the appropriate approved code of practice, design verification to include seismic loadings; and
3. Is CE marked and accompanied by manufacturing documentation (in English), as follows:
  - Under Pressure Equipment Directive 97/23/EC, CE marking as per Article 15, and EC declaration of conformity as per Annex VII.
  - Under Simple Pressure Vessel Directive (87/404/EEC), CE marking as per Article 16, and the documentation is to comprise a copy each of the 'EC declaration of conformity', and other documentation appropriate to the pressure-volume characteristic of the vessel, such as:
    - EC verification certificate
    - EC type-examination certificate
    - Certificate of adequacy

CE marked pressure equipment, which requires design verification because of seismic considerations, must be design verified by a recognised inspection body and be accompanied by a certificate of design verification.

In summary, CE marking, supported by relevant manufacturing documentation, may be accepted as indicating that equipment has undergone acceptable fabrication inspection during manufacture. Equipment which is not accompanied by the appropriate documentation is not acceptable.

## Business (more or less) as usual

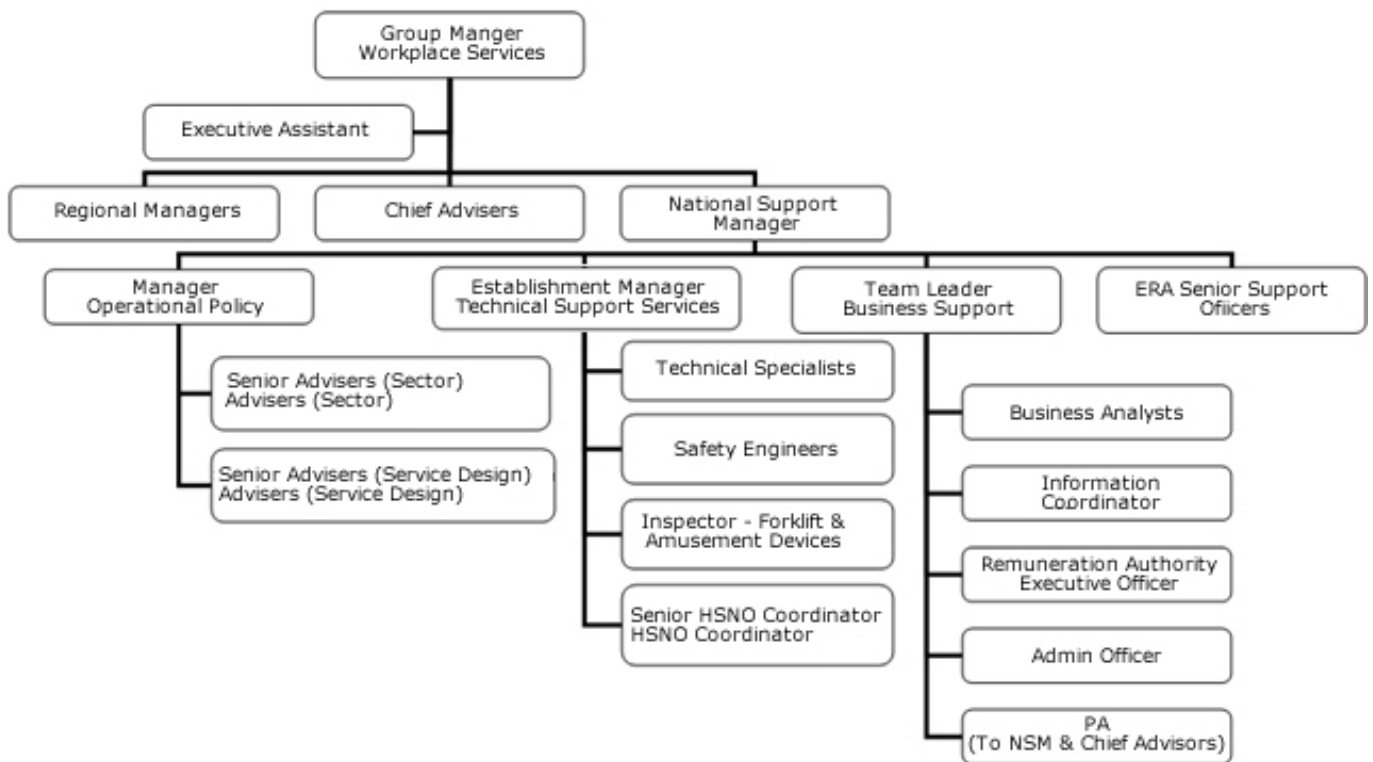
Many of our readers are aware that the Department of Labour has been undergoing a restructure, and some have expressed concerns about continuity of service. The engineering team has now been absorbed into a larger Technical Support Services Team within a main group of the Department called Workplace Services Support.

The National Support Manager is responsible to the Group Manager for a number of functions including operational policy, technical support, business support and management of support staff for two independent authorities (Employment Relations Authority and Remuneration Authority).

The Establishment Manager Technical Support Services, to whom the Safety Engineers report, leads the coordination and support of the technical support system for Workplace Services and Workplace. This is a 6-month fixed term position, with the purpose of reviewing the technical support system, to determine the optimal technical specialist capability and capacity. The Establishment Manager will also scope the ongoing role for a Manager Technical Support Services.

There will be a gradual change towards this new structure as key appointments are made. Until the change is fully implemented it is quite literally business as usual, with all the usual functions being carried out. If there are any eventual changes to the way we work, we'll endeavour to keep interested parties fully informed.

### Workplace Services National Office Structure



## Announcements

The following organisation has been recognised under the PECPR Regulations as an Inspection Body for the design verification and fabrication inspection of pressure equipment:

### **SGS Australia Pty Ltd**

Industrial Division, Sydney  
7/110 Silverwater Road  
Silverwater NSW 2128  
Australia

A full list of recognised inspection bodies and qualification issuing agencies along with known contact details can be viewed at the [Engineering Safety Web site](#).

---

## 3rd Metals Industry Conference

The strategic goal of the Conference is to enable the New Zealand Metals Industry (NZMI) to identify and increasingly participate on the global market in activities where New Zealand industry can be competitive and profitable. The Conference aims to stimulate discussion and development of the fledgling NZMI strategy in the various sector groups and, at the same time, begin to implement priority actions identified in the strategy. New Zealand Trade and Enterprise, for example, drive strategy-specific sessions aimed at providing know-how and initiative to gear up New Zealand businesses for the global environment.

An attendance of 300 plus delegates is expected.

1-3 November 2006

Venue: Kingsgate Hotel, Hamilton

Register now on [www.hera.org.nz](http://www.hera.org.nz) (follow the Conference link)

---

## HERA Courses and Seminars

HERA Training Centre is offering the following courses and seminars over the remainder of 2006:

| <b>Activity</b>  | <b>Date</b>   |
|--|---|
| Management Appreciation in NDT and Quality Control             | 25 October  |
| Welding Defects – Causes, Remedies and Inspection              | 26 October  |
| Welded Structures – Failures that could be avoided             | 31 October (Rotorua)<br>8 November (Wellington)<br>10 November (Christchurch)<br>14 November (Invercargill)<br>15 November (Auckland) |
| AS/NZS 3788: 2006 – Pressure equipment – In-service inspection | 14 December   |

The venue for the above courses and seminars in Auckland is:

### **HERA House**

17 - 19 Gladding Place  
MANUKAU CITY (South Auckland)

To enrol contact:  
**HERA Training Centre**  
 P O Box 76134  
 Manukau City

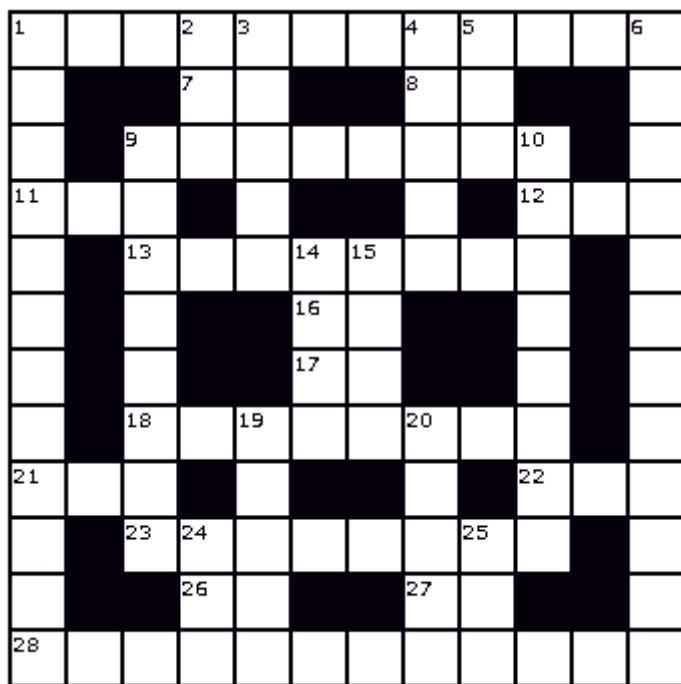
Phone: 09 262 2885  
 Fax: 09 262 2856  
 Email: [admin@hera.org.nz](mailto:admin@hera.org.nz)

**Note:** Enrolment closes 7 days before start of course or seminar.

For seminars outside Auckland visit [www.hera.org.nz](http://www.hera.org.nz) and click training centre or contact:

**Peter Hayward**  
 Phone: 09 262 4847  
 Email: [peter.hayward@hera.org.nz](mailto:peter.hayward@hera.org.nz)

### Puzzle Place



Answers include abbreviations and acronyms.

Answers can be obtained by email from [robin.bain@dol.govt.nz](mailto:robin.bain@dol.govt.nz).

#### ACROSS

- 1 Confirmations
- 7 Astatine
- 8 King and Emperor
- 9 Hydrometric scale
- 11 Eggs
- 12 Sick
- 13 Happened to
- 16 Silicon
- 17 Degree
- 18 Of lower quality
- 21 Breaking of divine law
- 22 Finish
- 23 Tended plants
- 26 Helium
- 27 Iowa
- 28 Not producing dependency

#### DOWN

- 1 Instance of changing back to a former state
- 2 Cutting tool
- 3 A pole useful for walking and defence
- 4 Concerning surface measure
- 5 Zero
- 6 Entrancing
- 9 Prohibiting
- 10 Hovered
- 14 Engineering society
- 15 Fibber
- 19 Discharged
- 20 Of charged atoms
- 24 Exclamation
- 25 Consume

## Answers to Safety Lines Issue 70 Crossword

| Across |          | Down |          |
|--------|----------|------|----------|
| 1      | Rope     | 2    | Overcast |
| 4      | Litre    | 3    | Enfold   |
| 6      | Neo      | 4    | Lose     |
| 8      | Smote    | 5    | Rat      |
| 10     | Evermore | 7    | HERA     |
| 11     | CAD      | 9    | Elder    |
| 12     | Aboard   | 11   | Cylinder |
| 14     | Shy      | 13   | Bar      |
| 15     | Brat     | 14   | Sheave   |
| 17     | Acetic   | 15   | Barbs    |
| 19     | Pervades | 16   | Adult    |
| 20     | Bel      | 17   | Ale      |
| 21     | Tents    | 18   | Isle     |
| 22     | Urge     | 19   | Pan      |

---

### Disclaimer

Every care is taken in the provision of information in Safety Lines but it is the reader's responsibility to confirm the accuracy of such information against relevant current legislation and approved codes of practice prior to placing reliance on it. The earlier the issue of Safety Lines, the more obviously important this becomes, as legislation and approved codes of practice may change over time.

Nothing in any issue of Safety Lines that contradicts any current legislation or approved code of practice may be relied upon. The Editor would appreciate being notified of any instance of such contradiction in an issue of Safety Lines, which was published after the publication of the current legislation or approved code of practice being contradicted.

For more information about Safety Lines, contact [Robin Bain](#)

**Issued by the Department of Labour, New Zealand**  
**<http://www.osh.dol.govt.nz>**