



DEPARTMENT OF
LABOUR
TE TARI MAHI

Forestry Bulletin

That Hung-Up Tree Again!

A feller suffered serious injuries when hit by a falling tree.

What Happened

A feller scarfed a tree and when the backcut was put in, the tree sat back. There was no suitable tree available to drive the tree in the intended direction of fall, so the tree was rescarfed to fall with its lean into standing trees. The backcut was put in, but the tree lodged in another tree while falling. The feller then moved forward of the cut-up tree to fell another tree. The hung-up tree was dislodged and fell into the work area.

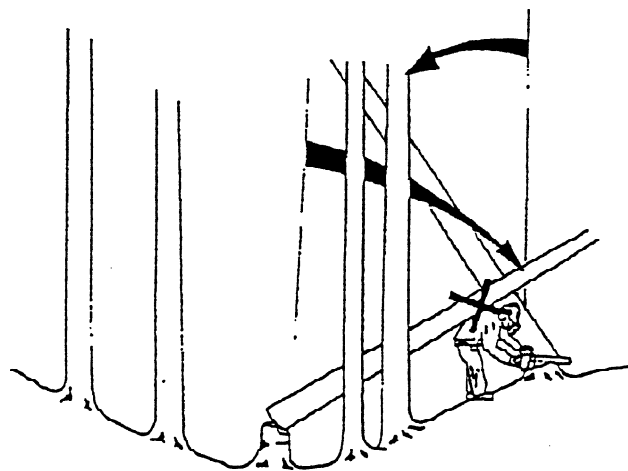
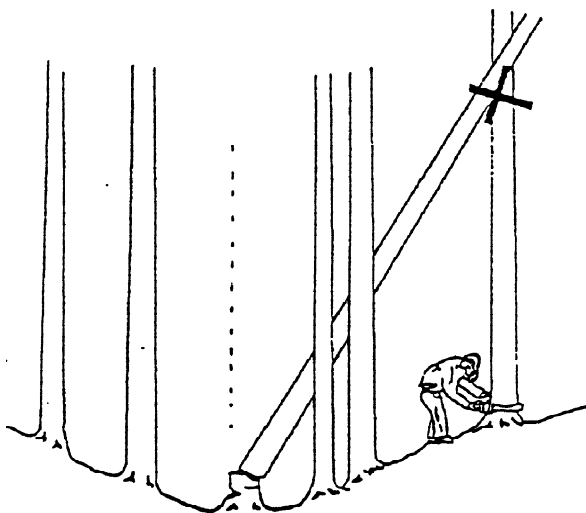
Accident Cause

Working forward within two tree lengths of the direction of fall of a hung-up tree.

Prevention

This is a classic example of not following the rules concerning hung-up trees. Let's look at them as detailed in the *Safety Code for Forest Operations* —Part 3: *Logging*.

1. Where a tree is hung-up it shall be brought to the ground as soon as possible, and before operations continue. The feller should have sought assistance and a machine should have been used to bring the tree to the ground.
2. No person shall move forward within two tree lengths of the intended direction of fall, or the direction of fall of a hung-up tree.



Working Within Two Tree Lengths Causes Serious Injuries

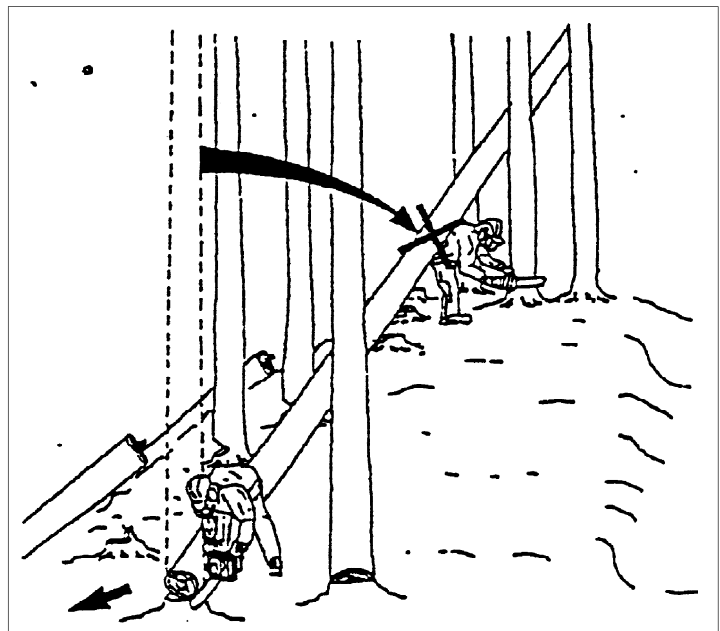
A worker was seriously injured when a tree felled by a fellow worker struck him.

What Happened

Two fallers from a radiate pine production thinning crew were transferred, due to oversupply in pulpwood, to a Douglas Fir clearfelling operation which contained much larger piece sizes. The fallers had worked in this piece size before.

Trees were being pre-scarfed and then felled alternately by the fallers until chainsaw maintenance was required by one of the fallers. The other faller continued to prescarf further trees.

At this stage, both fallers started to fell the pre-scarfed trees. A tree from one faller went back from the intended direction of fall and struck the other worker, who was well within the two tree lengths clearance zone required. The tree struck the worker on the head, causing severe neck and spinal injuries.



Accident Cause

1. Examination of the stump showed that incorrect felling methods had been used.
 - a) The scarf was overcut.
 - b) There was no holding wood.
 - c) There was no evidence of a wedge being used.
2. The faller injured was within two tree lengths of the tree being felled.
3. Pre-scarfing meant the accepted methods of completing the scarf and backcut before moving to another tree were not complied with.

Prevention

1. Use correct felling methods. Complete scarf and backcut before moving to another tree. If two
2. Never work within two tree lengths of a tree felling operation.

fallers are working together felling trees, felling cuts shall only be made by one person at a time.