

# FORESTRY BULLETIN

## Working Within Two Tree Lengths Causes Serious Injuries

A worker was seriously injured when a tree felled by a fellow worker struck him.

### What happened:

Two fallers from a radiata pine production thinning crew were transferred, due to oversupply in pulpwood, to a Douglas Fir clearfelling operation which contained much larger piece sizes. The fallers had worked in this piece size before.

Trees were being pre-scarfed and then felled alternately by the fallers until chainsaw maintenance was required by one of the fallers. The other faller continued to pre-scarf further trees.

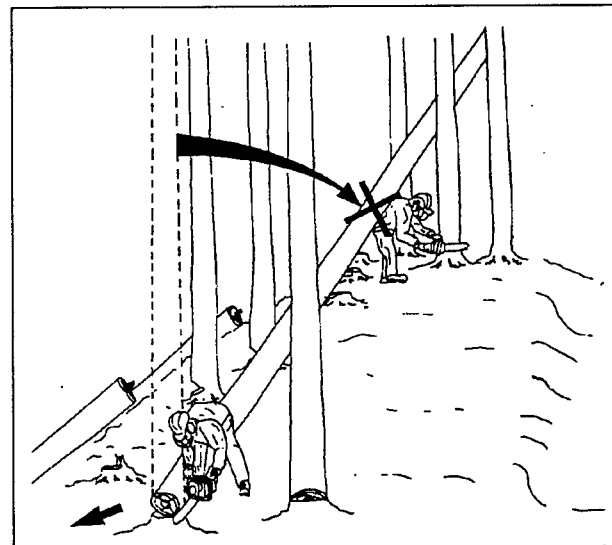
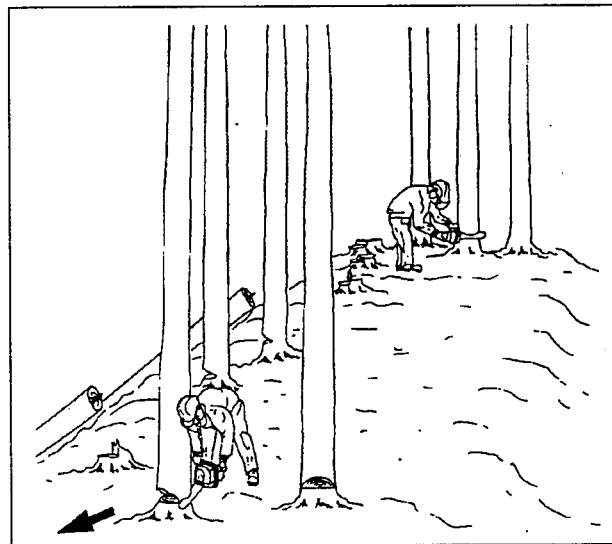
At this stage both fallers started to fell the pre-scarfed trees. A tree from one faller went back from the intended direction of fall and struck the other worker who was well within the two tree lengths clearance zone required. The tree struck the worker on the head causing severe neck and spinal injuries.

### Accident cause:

1. Examination of the stump showed that incorrect felling methods had been used.
  - a) The scarf was overcut.
  - b) There was no holding wood.
  - c) There was no evidence of a wedge being used.
2. The faller injured was within two tree lengths of the tree being felled.
3. Pre-scarfing meant the accepted methods of completing the scarf and backcut before moving to another tree were not complied with.

### Prevention:

1. Use correct felling methods. Complete scarf and backcut before moving to another tree. If two fallers



are working together felling trees, felling cuts shall only be made by one person at a time.

2. Never work within two tree lengths of a tree felling operation.

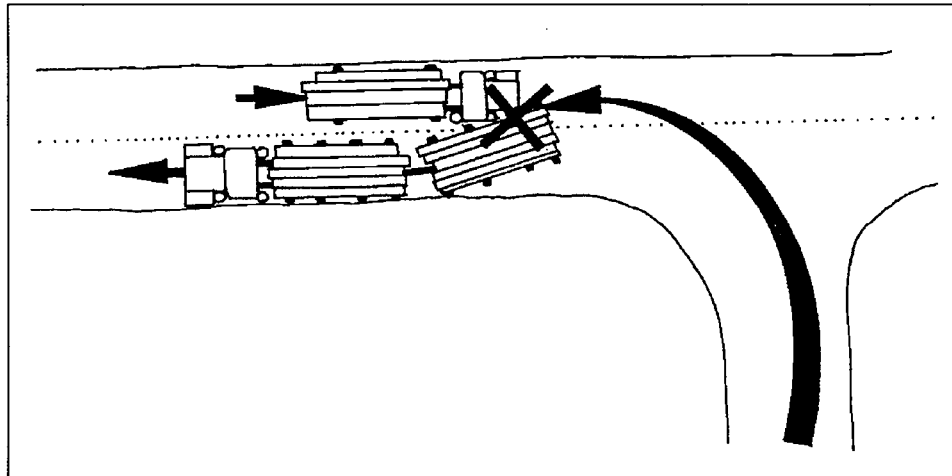
# Miscalculation Leads to Expensive Logging Truck Crash

A single unit hit the trailer of a turning double unit causing extensive truck damage and severe head bruising to the driver of the single unit.

## What happened

The double unit was travelling towards a main arterial road and was to turn left onto it. On approaching the "Give Way" corner, the driver gave little attention to see if the road was clear. Perhaps this is summed up thus: "because it's a real grind to come around there". The driver had, therefore, committed his unit to crossing on to the wrong side of the arterial road to ensure the second trailer would negotiate the intersection.

The driver of the single unit assumed that the turning truck was also a single unit as a double unit would have insufficient time to clear the intersection. As he approached the intersection and passed the tractor unit, the trailer came into sight. He tried to take evasive action by moving to the shoulder of the road but struck the first of the two back axles of the trailer.

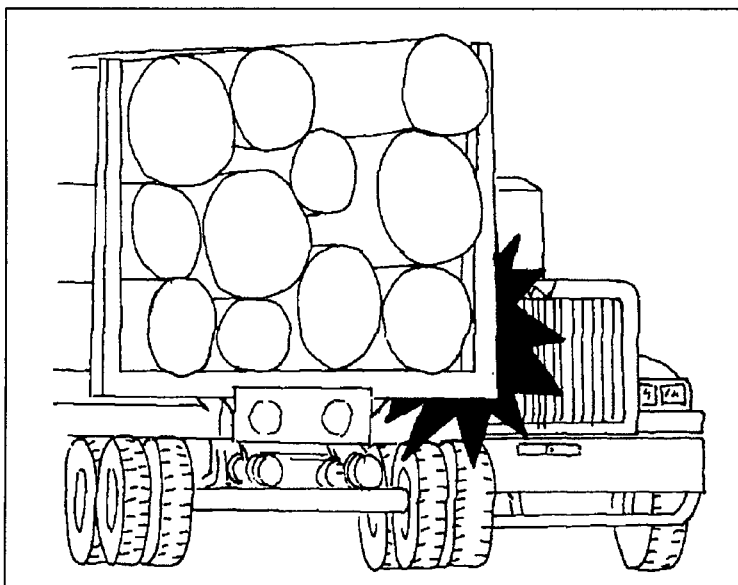


The tractor unit of the single unit was a write-off and the trailers of both units were badly damaged but repairable.

It is fortunate that the accident did not cause much more serious injuries to the driver of the single unit.

## Accident cause

- Failure of the double unit driver to check that the road was clear.
- Turning at the intersection with insufficient time to clear it safely.



## Prevention

- Compliance with the requirements of road rules.
- Strict attention to clearance distances required at intersections.

Identification of units has been introduced since this accident occurred:

- Two flashing amber lights: Full-length tree cartage.
- One flashing amber light: Overwidth and multiple trailer units. Off-highway units.
- Lights are to be operated from one hour before sunrise to one hour after sunset.