



BUSH BULLETIN

Bush fatalities and serious accidents Six-month summary—April/September 1993

The tables below detail the accidents reported for the first six months of the Health and Safety in Employment Act. This Act came into force on 1 April 1993.

A future Bush Bulletin will detail the implications of the Act for people in forest operations.

There is a report on a serious accident on the reverse side of this bulletin.

Logging

Fatalities 5

Logging	3
Commercial firewood	1
Export logs handling	1

Serious accidents 108

Activity	Cause	
Felling	Falling object	9
Trimming	Moving object	41
Crosscutting	Hit object	3
Breaking out	Contact object carried	10
Hauling	Slip/fall	13
Skidwork	Lifting/stretching	2
Stacking/sorting	Pulled/pushed	2
Driving/operating	Jumping	9
Log transport	Kickback	13
Walking	Mechanical malfunction	2
	Contact material	1
	Misjudgement	2
	Thrown out	1
		<u>108</u>

External agency

External agency	Type of injury	
Chainsaw	Fracture	37
Branch	Dislocation	4
Log	Sprain/strain	9
Tree	Laceration	33
Skidder	Bruise	8
Loader	Crushing	8
Uprooted stump	Foreign body in eye	1
Part tree	Puncture	1
Handtool	Concussion	1
Rigging	Multiple	6
Terrain		
None		
Grit/dirt		
		<u>108</u>

Body part

Body part		
Head	Back	3
Shoulder	Knee	12
Elbow	Leg	14
Arm	Foot	17
Hand	Multiple	10
Trunk		
		<u>108</u>

Forestry and tree work

Fatalities 2

Firewood	
Collecting for own use	1
Collecting for charity	1

Serious accidents 42

Activity	Cause	
Felling	Moving object	8
Roading	Hit object	8
Planting	Contact object carried	5
Pruning	Slip/fall	16
Thinning	Lift/stretching	1
Driving/operating	Repetitive movement	1
Portable milling	Kickback	2
Crosscutting	Contact material	1
Trimming		
Travel		
Training		
		<u>42</u>

External agency

External agency	Type of injury	
Chainsaw	Fracture	5
Branch	Dislocation	3
Tree	Strain/sprain	6
Shrub	Laceration	16
Handtool	Bruise	4
Vehicle	Crushing	2
Flitch	Multiple	2
Ladder	Puncture	3
Stick	Foreign body in eye	1
Terrain		
Rock		
		<u>42</u>

Body part

Body part		
Head	Trunk	3
Shoulder	Back	3
Elbow	Knee	3
Arm	Leg	7
Hand	Foot	2
Multiple		
		<u>42</u>

The above accidents were reported to Health and Safety Inspectors (Bush) in the six months ending September 1993.

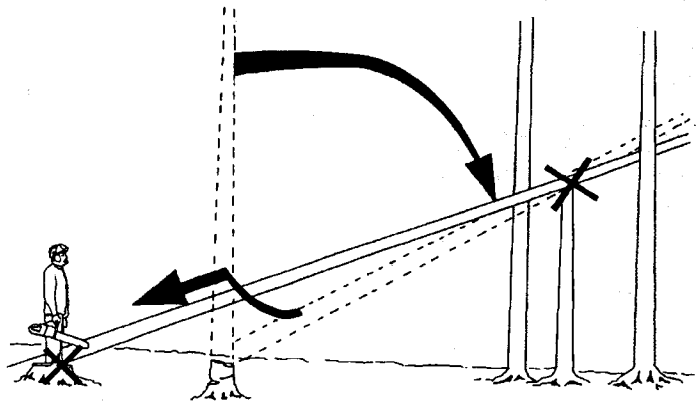
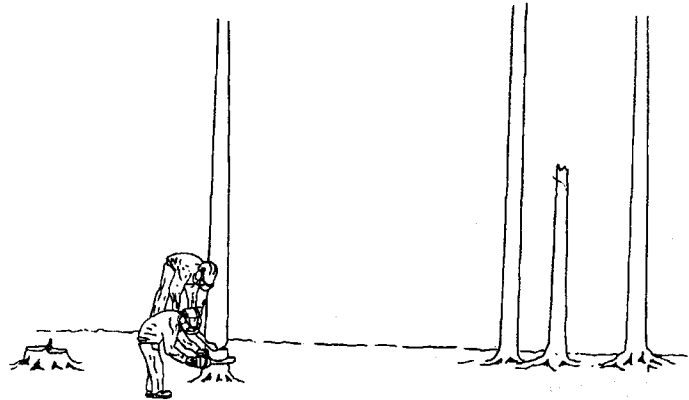
Feller injured when tree slides back

A 28-year-old feller received a fractured lower left leg when struck by a tree sliding back.

What happened

A tree sat back on a workmate's chainsaw so it could not be felled in the desired direction.

The feller was requested to assist in felling it. As it had sat back it was scarfed and back cut in the opposite direction. This meant the tree was falling into standing timber. As it fell, the tree struck a 5 metre high spar and slid back off the stump 4 metres, striking the feller as he tried to move away. He suffered a fractured lower left leg.



Accident cause

Not felling a tree into an open space—in this case into standing trees.

Standing in the danger area after felling the tree.

Prevention

The "Safety Code for Forest Operations - Part 3 - Logging" states:

"19.1 Wherever possible, trees should be felled towards a clear open space".

In this case the skidder should have been used to bring the tree down to avoid felling into standing trees.

"18.6 The escape route shall be diagonally to the rear at approximately 135° from the direction of fall".

The feller was standing in the area to the rear clearly labelled "DANGER AREA". See sketch below.

